

Population Distribution

CONTEXT

The distribution patterns of our overall population reflect the strength, or lack thereof, of our management of growth and our sensitivity to managing the allocation of resources to support the distribution of the population.

Population growth and distribution are shaped by the values of a community. How well we incorporate sustainability into our values will determine how well we benefit or are hindered by ongoing growth.

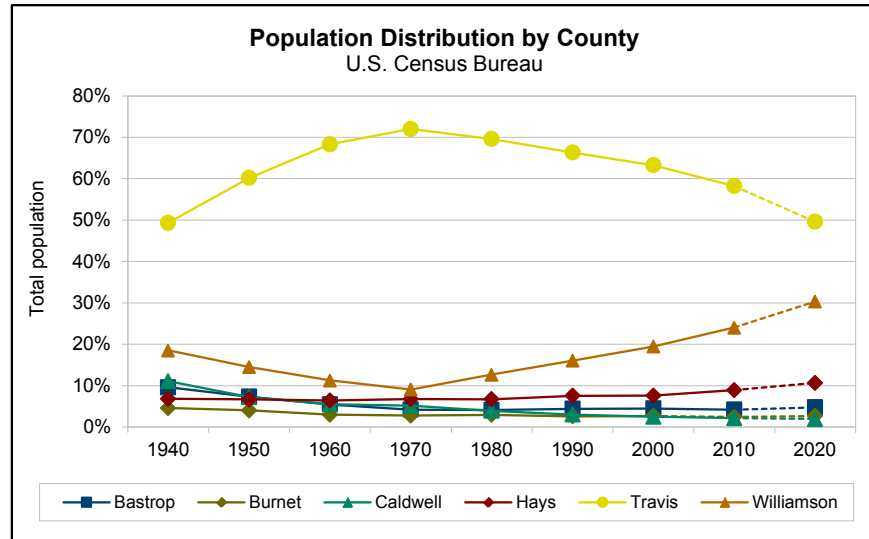
As cities age and expand, balancing the costs of services to old and new neighborhoods becomes increasingly complex.

SOURCES

Page 114

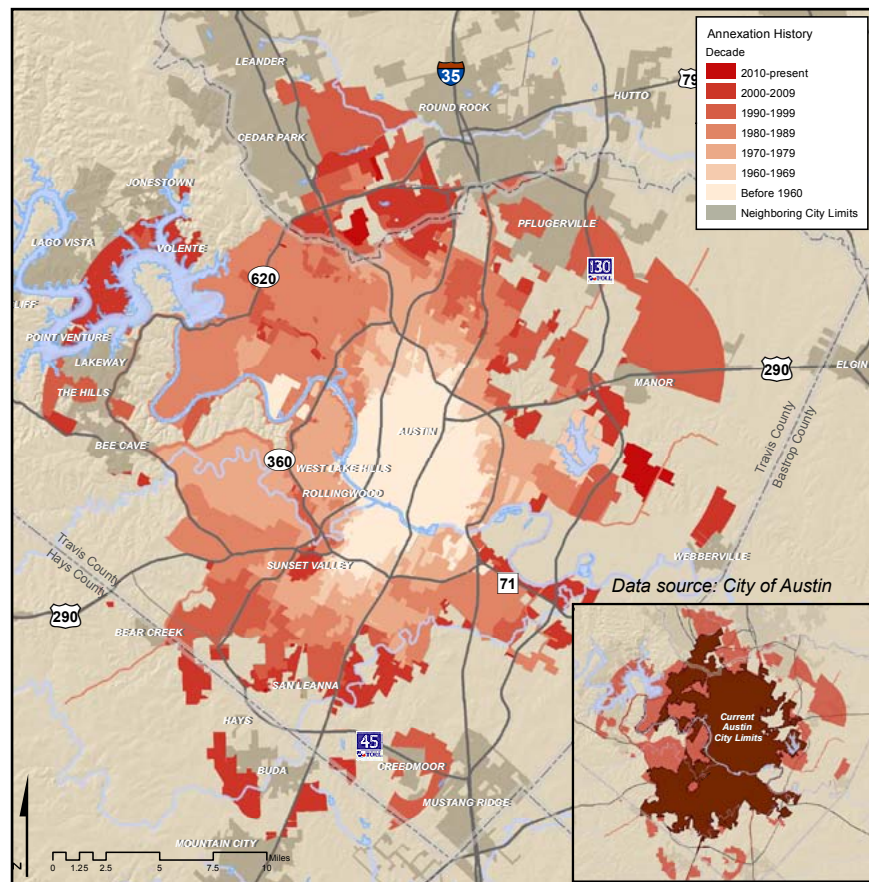
Distribution by County

- In 2020, Travis County is projected to house approximately 50% of the total regional population, down from a peak of 74% in 1970.



Growth Management Patterns

- Annexation patterns reflect responses to growth and demand for services.



2010 Population Distribution by Census Block Group

- According to the 2010 Census, the population density of the Central Texas region continues to be within Austin and along the IH-35 corridor. Quickly emerging nodes and strips of density, especially in Williamson and Hays counties, suggest development patterns are contributing to a sprawling population distribution and placing stress upon the provision of services.

